

MEMORANDUM

DATE: November 20, 2018
TO: Mayor White & City Council
VIA: Mercy Rushing, City Administrator

FROM: Cindy Karch, City Secretary CK
SUBJECT: Discuss and consider action to award a bid for purchase of three public works trucks per the 2019 budget.
Council Meeting Agenda Item for November 26, 2018

Background Information:

The 2019 budget authorized purchase of three new trucks in the water department. Budget was \$108,000.00. A notice of bid was placed on BuyBoard two quotes were received:

Vendor	Price Each	Price Total
Chastang Ford	\$32,488	\$ 97,464
Grande Ford	\$36,478	\$109,434

Recommendation:

It is recommended that council award the bid To Chastang Ford for \$97,464.00

Final Disposition:



Chastang Ford
6200 N. Loop East, Houston, Texas, 770261936
Office: 713-678-5000
Fax: 713-678-5001

Customer Proposal

Prepared by:

Ed Miller
Office: 713-678-5007
Email: emiller@chastangford.com

Date: 04/03/2018

Vehicle: 2019 F-350 Chassis XL
4x2 SD Regular Cab 145" WB DRW

Quote ID: mineo19f3g





Selected Options

Code	Description	MSRP
Base Vehicle		
F3G	Base Vehicle Price (F3G)	\$34,740.00
Packages		
640A	Order Code 640A <i>Includes:</i> - Engine: 6.2L 2-Valve SOHC EFI NA V8 Flex-Fuel - Transmission: TorqShift 6-Speed Automatic (6R140) <i>Includes SelectShift.</i> - 3.73 Axle Ratio - GVWR: 14,000 lb Payload Package - Tires: LT245/75Rx17E BSW PLUS A/S - Wheels: 17" Argent Painted Steel <i>Hub covers/center ornaments not included.</i> - HD Vinyl 40/20/40 Split Bench Seat <i>Includes center armrest, cupholder, storage and driver's side manual lumbar.</i> - Radio: AM/FM Stereo <i>Includes 4-speakers.</i>	N/C
Powertrain		
996	Engine: 6.2L 2-Valve SOHC EFI NA V8 Flex-Fuel	Included
44P	Transmission: TorqShift 6-Speed Automatic (6R140) <i>Includes SelectShift.</i>	Included
X37	3.73 Axle Ratio	Included
STDGV	GVWR: 14,000 lb Payload Package	Included
Wheels & Tires		
TD8	Tires: LT245/75Rx17E BSW PLUS A/S	Included
64K	Wheels: 17" Argent Painted Steel <i>Hub covers/center ornaments not included.</i>	Included
512	Spare Tire, Wheel & Jack REQUIRED in Rhode Island. <i>Excludes carrier.</i> <i>Includes:</i> - 4-Ton Hydraulic Jack	\$350.00
Seats & Seat Trim		
A	HD Vinyl 40/20/40 Split Bench Seat <i>Includes center armrest, cupholder, storage and driver's side manual lumbar.</i>	Included

Other Options

Prices and content availability as shown are subject to change and should be treated as estimates only. Actual base vehicle, package and option pricing may vary from this estimate because of special local pricing, availability or pricing adjustments not reflected in the dealer's computer system. See salesperson for the most current information. | Prices and content availability as shown are subject to change and should be treated as estimates only. Actual base vehicle, package and option pricing may vary from this estimate because of special local pricing, availability or pricing adjustments not reflected in the dealer's computer system. See salesperson for the most current information.



Selected Options (cont'd)

Code	Description	MSRP
PAINT	Monotone Paint Application	STD
145WB	145" Wheelbase	STD
61J	4-Ton Hydraulic Jack	Included
	REQUIRED in Rhode Island.	
67E	Extra Extra Heavy-Duty Alternator (240 Amp)	\$85.00
52B	Trailer Brake Controller	\$270.00
	<i>Includes smart trailer tow connector. Verified to be compatible with electronic actuated drum brakes only.</i>	
STDRD	Radio: AM/FM Stereo	Included
	<i>Includes 4-speakers.</i>	
Emissions		
425	50-State Emissions System	STD
Interior Colors		
AS_01	Medium Earth Gray	N/C
Primary Colors		
Z1_01	Oxford White	N/C
Upfit Options		
30085-01	Install 9' Gooseneck body and related equipment	\$3,995.00
	<i>9' gooseneck body class V receiver hitch flaps lights and reflectors</i>	
Buy Board	Buy Board Fee	\$5,985.00
SUBTOTAL		\$45,425.00
Destination Charge		\$1,295.00
TOTAL		\$46,720.00

Prices and content availability as shown are subject to change and should be treated as estimates only. Actual base vehicle, package and option pricing may vary from this estimate because of special local pricing, availability or pricing adjustments not reflected in the dealer's computer system. See salesperson for the most current information. | Prices and content availability as shown are subject to change and should be treated as estimates only. Actual base vehicle, package and option pricing may vary from this estimate because of special local pricing, availability or pricing adjustments not reflected in the dealer's computer system. See salesperson for the most current information.



Chastang Ford
 6200 N. Loop East, Houston, Texas, 770261936
 Office: 713-678-5000
 Fax: 713-678-5001

2019 F-350 Chassis, SD Regular Cab
 4x2 SD Regular Cab 145" WB DRW XL(F3G)
 Price Level: 915 Quote ID: mineo19f3g

Pricing - Single Vehicle

	MSRP
<i>Vehicle Pricing</i>	\$46,720.00
<i>Pre-Tax Adjustments</i>	
Description	
DISCOUNT AND CONCESSION	-\$14,232.00
<hr/>	
Total	\$32,488.00

 Customer Signature

 Acceptance Date

Prices and content availability as shown are subject to change and should be treated as estimates only. Actual base vehicle, package and option pricing may vary from this estimate because of special local pricing, availability or pricing adjustments not reflected in the dealer's computer system. See salesperson for the most current information. | Prices and content availability as shown are subject to change and should be treated as estimates only. Actual base vehicle, package and option pricing may vary from this estimate because of special local pricing, availability or pricing adjustments not reflected in the dealer's computer system. See salesperson for the most current information.



Selected Equipment & Specs

Dimensions

- * Exterior length: 230.7"
- * Exterior width: 80.0"
- * Wheelbase: 145.0"
- * Rear track: 71.1"
- * Rear tire outside width: 92.2"
- * Front legroom: 43.9"
- * Front hiproom: 62.5"
- * Passenger volume: 64.6cu.ft.
- * Maximum cargo volume: 11.6cu.ft.
- * Cab to axle: 60.0"
- * Exterior height: 78.1"
- * Front track: 68.3"
- * Turning radius: 25.0'
- * Min ground clearance: 7.9"
- * Front headroom: 40.8"
- * Front shoulder room: 66.7"
- * Cargo volume: 11.6cu.ft.

Powertrain

- * 385hp 6.2L SOHC 16 valve V-8 engine with variable valve control, SMP1
- * federal
- * Rear-wheel drive
- * Fuel Economy Highway: N/A
- * Recommended fuel : regular unleaded
- * TorqShift 6 speed automatic transmission with overdrive
- * Fuel Economy Cty: N/A

Suspension/Handling

- * Front Twin I-Beam independent suspension with anti-roll bar, HD shocks
- * Firm ride Suspension
- * Front and rear 17 x 6.5 argent steel wheels
- * Dual rear wheels
- * Rear DANA M300 rigid axle leaf spring suspension with anti-roll bar, HD shocks
- * Hydraulic power-assist re-circulating ball Steering
- * LT245/75SR17 EBSW AS front and rear tires

Body Exterior

- * 2 doors
- * Black door mirrors
- * Trailer harness
- * Front and rear 17 x 6.5 wheels
- * Driver and passenger , manual folding door mirrors
- * Black bumpers
- * Clearcoat paint
- * 2 front tow hook(s)

Convenience

- * Manual air conditioning with air filter
- * Manual door locks
- * Manual telescopic steering wheel
- * 1 1st row LCD monitor
- * Passenger visor mirror
- * Manual front windows
- * Manual tilt steering wheel
- * Day-night rearview mirror
- * Front cupholders

Seats and Trim

- * Seating capacity of 3
- * 4-way driver seat adjustment
- * 4-way passenger seat adjustment
- * Front 40-20-40 split-bench seat
- * Manual driver lumbar support
- * Centre front armrest with storage

Entertainment Features

- * AM/FM stereo radio
- * Fixed antenna
- * 4 speakers

Lighting, Visibility and Instrumentation

Prices and content availability as shown are subject to change and should be treated as estimates only. Actual base vehicle, package and option pricing may vary from this estimate because of special local pricing, availability or pricing adjustments not reflected in the dealer's computer system. See salesperson for the most current information. | Prices and content availability as shown are subject to change and should be treated as estimates only. Actual base vehicle, package and option pricing may vary from this estimate because of special local pricing, availability or pricing adjustments not reflected in the dealer's computer system. See salesperson for the most current information.



Selected Equipment & Specs (cont'd)

- * Halogen aero-composite headlights
- * Fully automatic headlights
- * Light tinted windows
- * Tachometer
- * Outside temperature display
- * Trip computer
- * Delay-off headlights
- * Variable intermittent front windshield wipers
- * Front reading lights
- * Oil pressure gauge
- * Low tire pressure warning
- * Trip odometer

Safety and Security

- * 4-wheel ABS brakes
- * 4-wheel disc brakes
- * Dual front impact airbag supplemental restraint system with passenger cancel
- * Safety Canopy System curtain 1st row overhead airbag supplemental restraint system
- * Manually adjustable front head restraints
- * Brake assist
- * Driveline traction control
- * Dual seat mounted side impact airbag supplemental restraint system
- * Manual door locks

Dimensions

General Weights

Curb	6159 lbs.	GVWR	14000 lbs.
Front GAWR	4250 lbs.	Rear GAWR	10040 lbs.
Payload	7940 lbs.	Front curb weight	3411 lbs.
Rear curb weight	2748 lbs.	Front axle capacity	5250 lbs.
Rear axle capacity	10400 lbs.	Front spring rating	4250 lbs.
Rear spring rating	10040 lbs.	Front tire/wheel capacity	5820 lbs.
Rear tire/wheel capacity	11640 lbs.		

Trailer Type

Harness	Yes	Brake controller	Yes
Trailer sway control	Yes		

General Trailering

5th-wheel towing capacity	13300 lbs.	Gooseneck towing capacity	13300 lbs.
Towing capacity	13400 lbs.	GCWR	20000 lbs.

Fuel Tank type

Capacity	40 gal.
----------------	---------

Off Road

Min ground clearance	8 "
----------------------------	-----

Interior cargo

Cargo volume	11.6 cu.ft.	Maximum cargo volume	11.6 cu.ft.
--------------------	-------------	----------------------------	-------------

Rear Frame

Height loaded	27 "	Height unloaded	32 "
---------------------	------	-----------------------	------

Powertrain

Engine Type

Block material	Iron	Cylinders	V-8
Head material	Aluminum	Ignition	Spark
Injection	Sequential MPI	Liters	6.2L
Orientation	Longitudinal	Recommended fuel	Regular unleaded
Valves per cylinder	2	Valvetrain	SOHC

Prices and content availability as shown are subject to change and should be treated as estimates only. Actual base vehicle, package and option pricing may vary from this estimate because of special local pricing, availability or pricing adjustments not reflected in the dealer's computer system. See salesperson for the most current information. | Prices and content availability as shown are subject to change and should be treated as estimates only. Actual base vehicle, package and option pricing may vary from this estimate because of special local pricing, availability or pricing adjustments not reflected in the dealer's computer system. See salesperson for the most current information.



Selected Equipment & Specs (cont'd)

Variable valve control	Yes		
Engine Spec			
Bore	4.02"	Compression ratio	9.8:1
Displacement	379 cu.in.	Stroke	3.74"
Engine Power			
SAEJ1349 AUG2004 compliant	Yes	Output	385 HP @ 5,750 RPM
Torque	430 ft.-lb @ 3,800 RPM		
Alternator			
Type	HD	Amps	240
Battery			
Amp hours	72	Cold cranking amps	650
Run down protection	Yes		
Transmission			
Electronic control	Yes	Lock-up	Yes
Overdrive	Yes	Speed	6
Type	Automatic		
Transmission Gear Ratios			
1st	3.974	2nd	2.318
3rd	1.516	4th	1.149
5th	0.858	6th	0.674
Reverse Gear ratios	3.128		
Transmission Torque Converter			
Stall ratio	1.90		
Transmission Extras			
Driver selectable mode	Yes	Sequential shift control	SelectShift
Oil cooler	Regular duty		
Drive Type			
Type	Rear-wheel		
Drive Feature			
Traction control	Driveline		
Drive Axle			
Ratio	3.73		
Exhaust			
Material	Stainless steel	System type	Single
Emissions			
CARB	Federal		
fuel Economy			
Fuel type	Gasoline		
Fuel Economy (Alternate 1)			
Fuel type	E85		

Driveability

Prices and content availability as shown are subject to change and should be treated as estimates only. Actual base vehicle, package and option pricing may vary from this estimate because of special local pricing, availability or pricing adjustments not reflected in the dealer's computer system. See salesperson for the most current information. | Prices and content availability as shown are subject to change and should be treated as estimates only. Actual base vehicle, package and option pricing may vary from this estimate because of special local pricing, availability or pricing adjustments not reflected in the dealer's computer system. See salesperson for the most current information.



Selected Equipment & Specs (cont'd)

Brakes

ABS	4-wheel	ABS channels	3
Type	4-wheel disc	Vented discs	Front and rear

Brake Assistance

Brake assist	Yes
--------------	-----

Suspension Control

Ride	Firm
------	------

Front Suspension

Independence	Twin I-Beam independent	Anti-roll bar	Regular
--------------	-------------------------	---------------	---------

Front Spring

Type	Coil	Grade	Regular
------	------	-------	---------

Front Shocks

Type	HD
------	----

Rear Suspension

Independence	DANA M300 rigid axle	Type	Leaf
Anti-roll bar	Regular		

Rear Spring

Type	Leaf	Grade	HD
------	------	-------	----

Rear Shocks

Type	HD
------	----

Steering

Activation	Hydraulic power-assist	Type	Re-circulating ball
------------	------------------------	------	---------------------

Steering Specs

# of wheels	2
-------------	---

Exterior

Front Wheels

Diameter	17"	Width	6.50"
----------	-----	-------	-------

Rear Wheels

Diameter	17"	Width	6.50"
Dual	Yes		

Spare Wheels

Wheel material	Steel
----------------	-------

Front and Rear Wheels

Appearance	Argent	Material	Steel
------------	--------	----------	-------

Front Tires

Aspect	75	Diameter	17"
Sidewalls	BSW	Speed	S
Tread	AS	Type	LT
Width	245mm	LT load rating	E
RPM	645		

Prices and content availability as shown are subject to change and should be treated as estimates only. Actual base vehicle, package and option pricing may vary from this estimate because of special local pricing, availability or pricing adjustments not reflected in the dealer's computer system. See salesperson for the most current information. | Prices and content availability as shown are subject to change and should be treated as estimates only. Actual base vehicle, package and option pricing may vary from this estimate because of special local pricing, availability or pricing adjustments not reflected in the dealer's computer system. See salesperson for the most current information.



Selected Equipment & Specs (cont'd)

Rear Tires

Aspect	75	Diameter	17"
Sidewalls	BSW	Speed	S
Tread	AS	Type	LT
Width	245mm	LT load rating	E
RPM	645		

Spare Tire

Mount	Frame mounted	Type	Full-size
-------------	---------------	------------	-----------

Wheels

Front track	68.3"	Rear track	71.1"
Turning radius	25.0'	Wheelbase	145.0"
Rear tire outside width	92.2"		

Body Features

Front license plate bracket	Yes	Body material	Aluminum
Side impact beams	Yes	Front tow hook(s)	2

Body Doors

Door count	2
------------------	---

Exterior Dimensions

Length	230.7"	Body width	80.0"
Body height	78.1"	Cab to axle	60.0"
Axle to end of frame	47.2"	Frame section modulus	12.7cu.in.
Frame yield strength (psi)	50000.0	Frame rail width	34.1"
Front bumper to Front axle	38.3"	Cab to end of frame	107.2"
Front bumper to back of cab	123.7"		

Safety

Airbags

Driver front-impact	Yes	Driver side-impact	Seat mounted
Overhead Safety Canopy System curtain 1st row		Passenger front-impact	Cancellable
Passenger side-impact	Seat mounted		

Seatbelt

Height adjustable	Front
-------------------------	-------

Seating

Passenger Capacity

Capacity	3
----------------	---

Front Seats

Split	40-20-40	Type	Split-bench
-------------	----------	------------	-------------

Driver Seat

Fore/aft	Manual	Reclining	Manual
Way direction control	4	Lumbar support	Manual

Passenger seat

Fore/aft	Manual	Reclining	Manual
----------------	--------	-----------------	--------

Prices and content availability as shown are subject to change and should be treated as estimates only. Actual base vehicle, package and option pricing may vary from this estimate because of special local pricing, availability or pricing adjustments not reflected in the dealer's computer system. See salesperson for the most current information. | Prices and content availability as shown are subject to change and should be treated as estimates only. Actual base vehicle, package and option pricing may vary from this estimate because of special local pricing, availability or pricing adjustments not reflected in the dealer's computer system. See salesperson for the most current information.



Selected Equipment & Specs (cont'd)

Way direction control	4		
<i>Front Head Restraint</i>			
Control	Manual	Type	Adjustable
<i>Front Armrest</i>			
Centre	Yes	Storage	Yes
<i>Front Seat Trim</i>			
Material	Vinyl	Back material	Vinyl
Convenience			
<i>AC And Heat Type</i>			
Air conditioning	Manual	Air filter	Yes
<i>Audio System</i>			
Radio	AM/FM stereo	Radio grade	Regular
Seek-scan	Yes		
<i>Audio Speakers</i>			
Speaker type	Regular	Speakers	4
<i>Audio Antenna</i>			
Type	Fixed		
<i>LCD Monitors</i>			
1st row	1	Primary monitor size (inches)	2.3
<i>Convenience Features</i>			
12V DC power outlet	2		
<i>Door Lock Activation</i>			
Type	Manual		
<i>Instrumentation Type</i>			
Display	Analog		
<i>Instrumentation Gauges</i>			
Tachometer	Yes	Oil pressure	Yes
Engine temperature	Yes	Transmission fluid temp	Yes
Engine hour meter	Yes		
<i>Instrumentation Warnings</i>			
Oil pressure	Yes	Engine temperature	Yes
Battery	Yes	Lights on	Yes
Key	Yes	Low fuel	Yes
Door ajar	Yes	Service interval	Yes
Brake fluid	Yes	Low tire pressure	Yes
<i>Instrumentation Displays</i>			
Clock	In-radio display	Exterior temp	Yes
Systems monitor	Yes		
<i>Instrumentation Feature</i>			
Trip computer	Yes	Trip odometer	Yes

Prices and content availability as shown are subject to change and should be treated as estimates only. Actual base vehicle, package and option pricing may vary from this estimate because of special local pricing, availability or pricing adjustments not reflected in the dealer's computer system. See salesperson for the most current information. | Prices and content availability as shown are subject to change and should be treated as estimates only. Actual base vehicle, package and option pricing may vary from this estimate because of special local pricing, availability or pricing adjustments not reflected in the dealer's computer system. See salesperson for the most current information.



Selected Equipment & Specs (cont'd)

Steering Wheel Type

Material Urethane Tilting Manual
 Telescoping Manual

Front Side Windows

Window 1st row activation Manual

Window Features

Tinted Light

Front Windshield

Wiper Variable intermittent

Rear Windshield

Window Fixed

Interior

Passenger Visor

Mirror Yes

Rear View Mirror

Day-night Yes

Headliner

Coverage Full Material Cloth

Floor Trim

Coverage Full Covering Vinyl/rubber

Trim Feature

Gear shift knob Urethane Interior accents Chrome

Lighting

Dome light type Fade Front reading Yes
 Variable IP lighting Yes

Storage

Front Beverage holder(s) Yes Glove box Locking
 Illuminated Yes Instrument panel Bin
 Dashboard Covered

Legroom

Front 43.9"

Headroom

Front 40.8"

Hip Room

Front 62.5"

Shoulder Room

Front 66.7"

Interior Volume

Passenger volume 64.6 cu.ft.

Prices and content availability as shown are subject to change and should be treated as estimates only. Actual base vehicle, package and option pricing may vary from this estimate because of special local pricing, availability or pricing adjustments not reflected in the dealer's computer system. See salesperson for the most current information. | Prices and content availability as shown are subject to change and should be treated as estimates only. Actual base vehicle, package and option pricing may vary from this estimate because of special local pricing, availability or pricing adjustments not reflected in the dealer's computer system. See salesperson for the most current information.



Chastang Ford
 6200 N. Loop East, Houston, Texas, 770261936
 Office: 713-678-5000
 Fax: 713-678-5001

2019 F-350 Chassis, SD Regular Cab
 4x2 SD Regular Cab 145" WB DRW XL(F3G)
 Price Level: 915 Quote ID: mineo19f3g

Warranty - Selected Equipment & Specs

Warranty

Basic

Distance 36000 miles Months 36 months

Powertrain

Distance 60000 miles Months 60 months

Corrosion Perforation

Distance Unlimited miles Months 60 months

Roadside Assistance

Distance 60000 miles Months 60 months

Prices and content availability as shown are subject to change and should be treated as estimates only. Actual base vehicle, package and option pricing may vary from this estimate because of special local pricing, availability or pricing adjustments not reflected in the dealer's computer system. See salesperson for the most current information. | Prices and content availability as shown are subject to change and should be treated as estimates only. Actual base vehicle, package and option pricing may vary from this estimate because of special local pricing, availability or pricing adjustments not reflected in the dealer's computer system. See salesperson for the most current information.

TEXAS LOCAL GOVERNMENT PURCHASING COOPERATIVE

BUYBOARD

10/23/2018

PRODUCT PRICING BASED ON CONTRACT

Customer: City of Mineola
 Product Description: F350 DRW w/ Gooseneck

A: Base Price in Bid/Proposal Number **521-16** \$ 20,887.00

B: Published Options (Itemize each item below)

84CA 169 W/B	\$ 725.00	67E HD Alt	\$ 350.00
TBM AT Tires	\$ 350.00	67X HD Ft Susp	\$ 450.00
X4L 4.30 L/S Axle	\$ 650.00	872 Rear View Camera	\$ 795.00
90L Power Group	\$ 1,450.00	91M Sync	\$ 650.00
425 50 State Emissions	\$ 575.00	31S Ship Thru	\$ 650.00
52B Trailer Brake controller	\$ 550.00		\$ -
525 Cruise Control	\$ 575.00	Goosneck bed	\$ 3,150.00
585 Radio with Sync	\$ 500.00		\$ -
	\$ -		\$ -
F3G 350 DRW	\$ 2,205.00		\$ -

Subtotal Column 1: \$ 7,580.00 Subtotal Column 2: \$ 6,045.00

Published Options added to Base Price (Subtotal of "Col 1" + "Col 2") \$ 13,625.00

C: Subtotal of A + B => \$ 34,512.00

D: UnPublished Options _____ %

Lightbar, del, receiver, ball, conn	\$ 1,566.00		\$ -
	\$ -		\$ -
	\$ -		\$ -
	\$ -		\$ -
	\$ -		\$ -

Subtotal Column 1: \$ 1,566.00 Subtotal Column 2: \$ -

Body \$ 1,566.00

E: Contract Pride Adjustment (If any, explain here) \$ - \$ -

F: Total of C + D + E (Not including Buy Board Fee) => \$ 36,078.00

G: Quantity Ordered (Units x F) => # of Units 1 \$ 36,078.00

H: BUYBOARD Fee (From Fee Schedules, Table: _____ => @ _____ % \$ 400.00

I: Non-Equipment Charges & Credits (ie: Ext. Warranty, Trade-In, Cost of Factory trips, etc.)
\$ -
\$ -

Subtotal of Non-Equipment Charges \$ -

J: TOTAL PURCHASE PRICE INCLUDING (G + H + I) => \$ 36,478.00

Grande Truck Center
 PO Box 201210
 San Antonio, Texas 78220

Rocky Shoffstall
 PH 210-666-7112
 FX 210-666-7216
 800-779-7672 X112
 10/23/2018



Knapheide Truck Equipment - Dallas
 398 N. I-35 Service Road
 Red Oak TX 75154
 Phone: 877-473-5763
 Fax: 972-617-8581
 www.dallas.knapheide.com

QUOTATION

Quote ID: CR00003851

Page 1 of 3

Customer: GRANDE TRUCK CENTER
 P.O. BOX 201210
 SAN ANTONIO TX 78220-8210

Quote Number: CR00003851
 Quote Date: 10/23/2018
 Quote valid until: 11/22/2018

Contact:
 Phone: 210-661-4121
 Fax: 1-210-666-7226

Prepared: crodarte
 By:
 Salesperson: ROBERT HILL
 PO#:

Enduser:

Make: FORD	Model: F-350	Year: 2019	Single/Dual: DRW
Cab Type: REGULAR	Wheelbase: 169.0	Cab-to-Axle: 84.0	VIN:

QTY	PART NUMBER	DESCRIPTION	UNIT PRICE	AMOUNT
1	PGNB-116A-K	PGNB-116A GOOSENECK PLATFORM 11' L FITS 84 CA DRW CHASSIS FEATURES INCLUDE: TAPERED HEADBOARD CLASS V RECEIVER HITCH 7-PIN TRAILER PLUG AT RECEIVER 2-5/16" GOOSENECK BALL - 25,000 LB TOW CAPACITY 7-PIN TRAILER PLUG AT GOOSENECK HEADBOARD MOUNTED RECESSED TAIL, BRAKE AND BACK UP LIGHTS RUB RAILS STAKE POCKETS FACTORY UNDERCOATING 12GA TREADPLATE WRAP AROUND DECK		
1	KNAP PGNB-116	includes the following features: - Installed Led marker lights and license plate light - Installed oval LED S/T/T and B/U lights in the bulkhead and rear tailskirt - Installed 6-circuit wire harness - Installed 7-way trailer plug in gooseneck and in the rear skirt - Chassis specific long sills installed for Ford, GM, & Ram 36",40", 42", and 56" CA chassis as standard, and 34" long sill spacing for 60" and 84" CA - Fuel fill cup installed in street side rail - Under the floor gooseneck ball hitch with 2-5/16" ball includes hinged door access. Hitch rated at 30,000 lbs. gross trailer weight, 5,000 lbs. max tongue weight. - Class V receiver hitch included on 8' RAM specific, 9' & 11' platforms, optional on 7' RAM & 7' - 8' GM platforms. Reciever has 2" receiver and is rated at 12,000 lbs. maximum gross weight, 2,000 lbs. maximum trailer weight. Mounting Kits: - One (1) mounting kit, for chassis specific bed delete/bed removal chassis is included. - Mounting Kit for Cab Chassis 60" & 84" CA will NOT be included, see PGNB gooseneck options below. Compatibility: - Ford & GM factory hitch compatible with 7' & 8' platforms. - 36" CA RAM factory hitch compatible with 7' platform. - Gooseneck platforms are not compatible with a hoist Specifications: - Hitch ball located 1 inch ahead of the rear axle centerline for 40", 42", and 56" CA chassis. - Hitch ball located 3 inches ahead of the rear axle centerline for 60" and		



Knapheide Truck Equipment - Dallas
 398 N. I-35 Service Road
 Red Oak TX 75154
 Phone: 877-473-5763
 Fax: 972-617-8581
 www.dallas.knapheide.com

QUOTATION

Quote ID: CR00003851

Page 2 of 3

QTY	PART NUMBER	DESCRIPTION	UNIT PRICE	AMOUNT
		84" CA chassis. 1) Ford specific 40" and 56" CA for MY 2017 and later vehicles. 2) GM specific 42" and 56" CA for MY 2011 and later vehicles. 3) RAM specific 36" and 56" CA for MY 2014 and later vehicles. Gooseneck hitch not included in body order. See loose hitch options below for RAM 2500 and 3500. Hitch options are mounted to the chassis-integrated mounting plate. 56" CA bodies only include receiver hitch.		
1	FAST 20-ELC001R0	ELECTRICAL CONNECTION KIT		
1	KTEC 00-CWT	CERTIFIED WEIGHT TICKET		
25	MISC SUPPLIES	SHOP SUPPLIES		
1	PDC LT1372	BRACKET FOR 2" LIGHT GROMMET		
10	PAIN MAT	PAINT SUPPLIES		
1	KNAP 80010320	PGN FORD MTG. CAB CHASSIS		
1	KTEC R/O PLA MUD FL	KIT, S/B MUD FLAPS - Red Oak		
2	BOOM SRI2430F1W12145	24X30 MUD FLAP W/LOGO 1/2" R.O		
1	FAST BPKEB38-Q8	BOLT PKG INST.MUD FLAP HARDWAR		
2	STEE 90-35R1	KSH MUD FLAP BRKT REV1		
1	KTEC 98-BRKSPARE-PGN	BRACKET SPARE MNT PGN		
2	PDC LT1372	BRACKET FOR 2" LIGHT GROMMET		
1	BUYE 8894047	LIGHTBAR 47in 32LED 12-24V AMBER		
1	BUYE 8894050	BRACKETS MTG STL BLACK PC		
1	BUYE 6391207	SWITCH PANEL ARROW STICK (4) ON/OFF (2)		
106	DELIVERY	DELIVERY TO MINEOLA FROM RED OAK		
1	DISCOUNT	STATE PRICING DISCOUNT		

Quote Total: \$4,651.00

Discount: \$0.00

Total Due(Sales tax not included): \$4,651.00

The following options may be added:

QUANTITY	DESCRIPTION	PRICE EACH	AMOUNT	ADD TO QUOTE
1	STATE INSPECTION	\$65.00	\$65.00	Yes / No

Notes:

INSTALL ON A 2019 F-350 84" CA DRW



Grande Truck Center
4562 IH 10 East, San Antonio, Texas, 782194205
Office: 210-661-4121
Fax: 210-666-7211

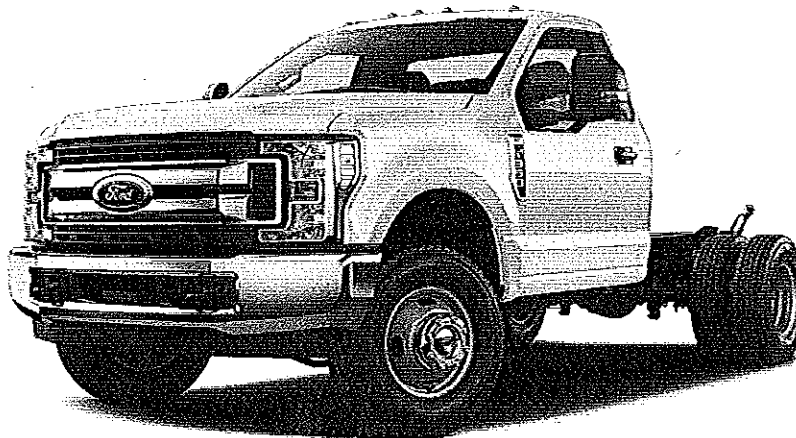
Customer Proposal

Prepared by:

ROCKY SHOFFSTALL
Office: 210-661-4121
Email: rshoffstall@grandetruck.com

Date: 10/23/2018

Vehicle: 2019 F-350 Chassis XL
4x2 SD Regular Cab 169" WB DRW





Grande Truck Center
4562 IH 10 East, San Antonio, Texas, 782194205
Office: 210-661-4121
Fax: 210-666-7211

Re: Vehicle Proposal

To Whom It May Concern,

Thank you very much for your interest in acquiring a vehicle from our dealership. We concur that your interest is well deserved. We hope that an outstanding product lineup and our dedication to customer service will enhance your ownership experience should you decide to buy a vehicle from us.

Attached, please find additional information that I hope will assist you in making a more informed decision. Please feel free to contact me at any time as I would truly appreciate the opportunity to be of service to you.

Sincerely,

ROCKY SHOFFSTALL

rshoffstall@grandetruck.com



Selected Options

Code	Description
F3G	Base Vehicle Price (F3G)
640A	Order Code 640A <i>Includes:</i> <ul style="list-style-type: none"> - Engine: 6.2L 2-Valve SOHC EFI NA V8 (Flex-Fuel) - Transmission: TorqShift 6-Speed Automatic (6R140) - Includes SelectShift. - GVWR: 14,000 lb Payload Package - Wheels: 17" Argent Painted Steel - Hub covers/center ornaments not included. - HD Vinyl 40/20/40 Split Bench Seat - Includes center armrest, cupholder, storage and driver's side manual lumbar.
996	Engine: 6.2L 2-Valve SOHC EFI NA V8 (Flex-Fuel)
44P	Transmission: TorqShift 6-Speed Automatic (6R140) <i>Includes SelectShift.</i>
X4L	Limited Slip w/4.30 Axle Ratio
STDGV	GVWR: 14,000 lb Payload Package
TBM	Tires: LT245/75Rx17E BSW A/T
64K	Wheels: 17" Argent Painted Steel <i>Hub covers/center ornaments not included.</i>
A	HD Vinyl 40/20/40 Split Bench Seat <i>Includes center armrest, cupholder, storage and driver's side manual lumbar.</i>
PAINT	Monotone Paint Application
169WB	169" Wheelbase
90L	Power Equipment Group <i>Deletes passenger side lock cylinder. Includes upgraded door-trim panel.</i> <i>Includes:</i> <ul style="list-style-type: none"> - Accessory Delay - Advanced Security Pack - Includes SecurLock Passive Anti-Theft System (PATS) and inclination/intrusion sensors. - Trailer Tow Mirrors w/Power Heated Glass - Includes manual telescoping, heated convex spotter mirror and integrated clearance lamps/turn signals. - MyKey - Includes owner controls feature. - Power Front Side Windows - Includes 1-touch up/down driver/passenger window. - Power Locks - Remote Keyless Entry
67X	Extra Heavy-Service Suspension Package <i>Includes pre-selected extra heavy-service front springs (see Order Guide Supplemental Reference for springs/FGAWR of specific vehicle configurations). Recommended only on vehicles which will permanently utilize aftermarket equipment such as heavy-duty winches, brush guards or other apparatus which loads the front axle to the specified Gross Axle Weight Rating (GAWR). NOTE 1: May result in a deterioration of ride quality. NOTE 2: Vehicle ride height will increase with the addition of this package.</i>
62R	Transmission Power Take-Off Provision <i>Includes mobile and stationary PTO modes.</i>
67E	Extra Extra Heavy-Duty Alternator (240 Amp)
52B	Trailer Brake Controller

Prices and content availability as shown are subject to change and should be treated as estimates only. Actual base vehicle, package and option pricing may vary from this estimate because of special local pricing, availability or pricing adjustments not reflected in the dealer's computer system. See salesperson for the most current information.



Grande Truck Center
 4562 IH 10 East, San Antonio, Texas, 782194205
 Office: 210-661-4121
 Fax: 210-666-7211

2019 F-350 Chassis, SD Regular Cab
 4x2 SD Regular Cab 169" WB DRW XL(F3G)
 Price Level: 930

Selected Options (cont'd)

Code	Description
872	<p><i>Includes smart trailer tow connector. Verified to be compatible with electronic actuated drum brakes only.</i></p> <p>Rear View Camera & Prep Kit</p> <p>Upfitters kit includes camera with mounting bracket, 14' jumper wire and camera mounting and aiming instructions. Kit requires video display option to be added to unit. Reference order guide for additional information. Related option content: 872, 585 and 96V.</p> <p><i>Includes cab wiring, frame wiring to the rear most cross member and electrochromic mirror with 4" video display.</i></p>
525	<p>Steering Wheel-Mounted Cruise Control (LPO)</p> <p>Requires valid FIN code.</p>
585_	<p>Radio: AM/FM Stereo/MP3 (LPO) (Fleet)</p> <p><i>Includes 4 speakers.</i> <i>Includes:</i> <i>- SYNC Communications & Entertainment System</i> <i>Includes enhanced voice recognition with 911 Assist, 4.2" LCD center stack screen, AppLink, 1 smart-charging USB port and steering wheel audio controls.</i></p>
425	50-State Emissions System
AS_01	Medium Earth Gray
Z1_01	Oxford White

Prices and content availability as shown are subject to change and should be treated as estimates only. Actual base vehicle, package and option pricing may vary from this estimate because of special local pricing, availability or pricing adjustments not reflected in the dealer's computer system. See salesperson for the most current information.



Selected Equipment & Specs

Dimensions

Exterior length: 254.8" * Cab to axle: 84.0" * Exterior width: 80.0" * Exterior height: 78.1" * Wheelbase: 169.0" * Front track: 69.1" * Rear track: 71.1" * Turning radius: 28.7' * Rear tire outside width: 92.2" * Min ground clearance: 7.9" * Front legroom: 43.9" * Front headroom: 40.8" * Front hiproom: 62.5" * Front shoulder room: 66.7" * Passenger volume: 64.6cu.ft. * Cargo volume: 11.6cu.ft. * Maximum cargo volume: 11.6cu.ft.

Powertrain

385hp 6.2L SOHC 16 valve V-8 engine with variable valve control, SMPI * Recommended fuel : regular unleaded * federal * TorqShift 6 speed automatic transmission with overdrive * Rear-wheel drive * Limited slip differential * Fuel Economy Cty: N/A * Fuel Economy Highway: N/A * Transmission PTO provision

Suspension/Handling

Front Twin I-Beam independent suspension with anti-roll bar, HD shocks * Rear DANA M300 rigid axle leaf spring suspension with anti-roll bar, HD shocks * Firm ride Suspension * Hydraulic power-assist re-circulating ball Steering * Front and rear 17 x 6.5 argent steel wheels * LT245/75SR17 EBSW AT front and rear tires * Dual rear wheels

Body Exterior

2 doors * Driver and passenger power remote heated, manual folding door mirrors with turn signal indicator * Turn signal indicator in mirrors * Black door mirrors * Black bumpers * Trailer harness * Clearcoat paint * Front and rear 17 x 6.5 wheels * 2 front tow hook(s)

Convenience

Manual air conditioning with air filter * Cruise control with steering wheel controls * Power front windows * Driver and passenger 1-touch up * Driver and passenger 1-touch down * Remote power door locks with 2 stage unlock and illuminated entry * Manual tilt steering wheel * Manual telescopic steering wheel * Day-night rearview mirror with auto-dimming * 911 Assist emergency SOS * Wireless phone connectivity * AppLink smart device integration * 2 1st row LCD monitors * Front cupholders * Passenger visor mirror * Driver and passenger door bins * Upfitter switches

Seats and Trim

Seating capacity of 3 * Front 40-20-40 split-bench seat * 4-way driver seat adjustment * Manual driver lumbar support * 4-way passenger seat adjustment * Centre front armrest with storage

Entertainment Features

AM/FM stereo radio with radio data system * SYNC external memory control * Steering wheel mounted radio controls * 4 speakers * Streaming audio * Fixed antenna

Lighting, Visibility and Instrumentation

Halogen aero-composite headlights * Delay-off headlights * Fully automatic headlights * Variable intermittent front windshield wipers * Light tinted windows * Front reading lights * Tachometer * Oil pressure gauge * Compass * Outside temperature display * Camera(s) - rear * Low tire pressure warning * Trip computer * Trip odometer

Safety and Security

4-wheel ABS brakes * Brake assist * 4-wheel disc brakes * Driveline traction control * Dual front impact airbag supplemental restraint system with passenger cancel * Dual seat mounted side impact airbag supplemental restraint system * Safety Canopy System curtain 1st row overhead airbag supplemental restraint system * Remote activated perimeter/approach lighting * Power remote door locks with 2 stage unlock and panic alarm * Security system with SecuriLock immobilizer * MyKey restricted driving mode * Manually adjustable front head restraints

Dimensions

General Weights

Curb	6165 lbs.	GVWR	14000 lbs.
Payload	7330 lbs.		

Front Weights

Prices and content availability as shown are subject to change and should be treated as estimates only. Actual base vehicle, package and option pricing may vary from this estimate because of special local pricing, availability or pricing adjustments not reflected in the dealer's computer system. See salesperson for the most current information.



Grande Truck Center
 4562 IH 10 East, San Antonio, Texas, 782194205
 Office: 210-661-4121
 Fax: 210-666-7211

2019 F-350 Chassis, SD Regular Cab
 4x2 SD Regular Cab 169" WB DRW XL(F3G)
 Price Level: 930

Selected Equipment & Specs (cont'd)

Front GAWR	5000 lbs.	Front curb weight	3515 lbs.
Front axle capacity	5250 lbs.	Front spring rating	5000 lbs.
Front tire/wheel capacity	5820 lbs.		

Rear Weights

Rear GAWR	10040 lbs.	Rear curb weight	2650 lbs.
Rear axle capacity	10400 lbs.	Rear spring rating	10040 lbs.
Rear tire/wheel capacity	11640 lbs.		

Trailer Type

Harness	Yes	Brake controller	Yes
Trailer sway control	Yes		

General Trailering

5th-wheel towing capacity	16540 lbs.	Gooseneck towing capacity	16540 lbs.
Towing capacity	16640 lbs.	GCWR	23500 lbs.

Fuel Tank type

Capacity	40 gal.
----------	---------

Off Road

Min ground clearance	8 "
----------------------	-----

Interior cargo

Cargo volume	11.6 cu.ft.	Maximum cargo volume	11.6 cu.ft.
--------------	-------------	----------------------	-------------

Rear Frame

Height loaded	27 "	Height unloaded	32 "
---------------	------	-----------------	------

Powertrain

Engine Type

Block material	Iron	Cylinders	V-8
Head material	Aluminum	Ignition	Spark
Injection	Sequential MPI	Liters	6.2L
Orientation	Longitudinal	Recommended fuel	Regular unleaded
Valves per cylinder	2	Valvetrain	SOHC
Variable valve control	Yes		

Engine Spec

Bore	4.02"	Compression ratio	9.8:1
Displacement	379 cu.in.	Stroke	3.74"

Engine Power

SAEJ1349 AUG2004 compliant	Yes	Output	385 HP @ 5,750 RPM
Torque	430 ft.-lb @ 3,800 RPM		

Alternator

Type	HD	Amps	240
------	----	------	-----

Battery

Amp hours	72	Cold cranking amps	650
Run down protection	Yes		

Transmission

Electronic control	Yes	Lock-up	Yes
Overdrive	Yes	Speed	6

Prices and content availability as shown are subject to change and should be treated as estimates only. Actual base vehicle, package and option pricing may vary from this estimate because of special local pricing, availability or pricing adjustments not reflected in the dealer's computer system. See salesperson for the most current information.



Selected Equipment & Specs (cont'd)

Type	Automatic		
<i>Transmission Gear Ratios</i>			
1st	3.974	2nd	2.318
3rd	1.516	4th	1.149
5th	0.858	6th	0.674
Reverse Gear ratios	3.128		
<i>Transmission Torque Converter</i>			
Stall ratio	1.90		
<i>Transmission Extras</i>			
Driver selectable mode	Yes	Sequential shift control	SelectShift
Oil cooler	Regular duty	PTO provision	Yes
<i>Drive Type</i>			
Type	Rear-wheel		
<i>Drive Feature</i>			
Limited slip differential	Mechanical	Traction control	Driveline
Power take-off provision	Yes		
<i>Drive Axle</i>			
Ratio	4.3		
<i>Exhaust</i>			
Material	Stainless steel	System type	Single
<i>Emissions</i>			
CARB	Federal		
<i>Fuel Economy</i>			
Fuel type	Gasoline		
<i>Fuel Economy (Alternate 1)</i>			
Fuel type	E85		
Driveability			
<i>Brakes</i>			
ABS	4-wheel	ABS channels	3
Type	4-wheel disc	Vented discs	Front and rear
<i>Brake Assistance</i>			
Brake assist	Yes		
<i>Suspension Control</i>			
Ride	Firm		
<i>Front Suspension</i>			
Independence	Twin I-Beam independent	Anti-roll bar	Regular
<i>Front Spring</i>			
Type	Coil	Grade	HD
<i>Front Shocks</i>			
Type	HD		
<i>Rear Suspension</i>			

Prices and content availability as shown are subject to change and should be treated as estimates only. Actual base vehicle, package and option pricing may vary from this estimate because of special local pricing, availability or pricing adjustments not reflected in the dealer's computer system. See salesperson for the most current information.



Grande Truck Center
 4562 IH 10 East, San Antonio, Texas, 782194205
 Office: 210-661-4121
 Fax: 210-666-7211

2019 F-350 Chassis, SD Regular Cab
 4x2 SD Regular Cab 169" WB DRW XL(F3G)
 Price Level: 930

Selected Equipment & Specs (cont'd)

Independence	DANA M300 rigid axle	Type	Leaf
Anti-roll bar	Regular		
Rear Spring			
Type	Leaf	Grade	HD
Rear Shocks			
Type	HD		
Steering			
Activation	Hydraulic power-assist	Type	Re-circulating ball
Steering Specs			
# of wheels	2		

Exterior

Front Wheels			
Diameter	17"	Width	6.50"
Rear Wheels			
Diameter	17"	Width	6.50"
Dual	Yes		
Front and Rear Wheels			
Appearance	Argent	Material	Steel
Front Tires			
Aspect	75	Diameter	17"
Sidewalls	BSW	Speed	S
Tread	AT	Type	LT
Width	245mm	LT load rating	E
RPM	645		
Rear Tires			
Aspect	75	Diameter	17"
Sidewalls	BSW	Speed	S
Tread	AT	Type	LT
Width	245mm	LT load rating	E
RPM	645		
Wheels			
Front track	69.1"	Rear track	71.1"
Turning radius	28.7'	Wheelbase	169.0"
Rear tire outside width	92.2"		
Body Features			
Front license plate bracket	Yes	Body material	Aluminum
Side impact beams	Yes	Front tow hook(s)	2
Body Doors			
Door count	2		
Exterior Dimensions			
Length	254.8"	Body width	80.0"
Body height	78.1"	Cab to axle	84.0"
Axle to end of frame	47.2"	Frame section modulus	12.7cu.in.

Prices and content availability as shown are subject to change and should be treated as estimates only. Actual base vehicle, package and option pricing may vary from this estimate because of special local pricing, availability or pricing adjustments not reflected in the dealer's computer system. See salesperson for the most current information.



Selected Equipment & Specs (cont'd)

Frame yield strength (psi)	50000.0	Frame rail width	34.1"
Front bumper to Front axle	38.3"	Cab to end of frame	131.2"
Front bumper to back of cab	123.7"		

Safety

Airbags

Driver front-impact	Yes	Driver side-impact	Seat mounted
Overhead Safety Canopy System curtain 1st row		Passenger front-impact	Cancellable
Passenger side-impact	Seat mounted		

Seatbelt

Height adjustable	Front
-------------------	-------

Security

Immobilizer	SecuriLock	Panic alarm	Yes
Restricted driving mode	MyKey		

Seating

Passenger Capacity

Capacity	3
----------	---

Front Seats

Split	40-20-40	Type	Split-bench
-------	----------	------	-------------

Driver Seat

Fore/aft	Manual	Reclining	Manual
Way direction control	4	Lumbar support	Manual

Passenger seat

Fore/aft	Manual	Reclining	Manual
Way direction control	4		

Front Head Restraint

Control	Manual	Type	Adjustable
---------	--------	------	------------

Front Armrest

Centre	Yes	Storage	Yes
--------	-----	---------	-----

Front Seat Trim

Material	Vinyl	Back material	Vinyl
----------	-------	---------------	-------

Convenience

AC And Heat Type

Air conditioning	Manual	Air filter	Yes
------------------	--------	------------	-----

Audio System

Radio	AM/FM stereo	Radio data system	Yes
Radio grade	Regular	Seek-scan	Yes
External memory control	SYNC		

Audio Speakers

Speaker type	Regular	Speakers	4
--------------	---------	----------	---

Audio Controls

Prices and content availability as shown are subject to change and should be treated as estimates only. Actual base vehicle, package and option pricing may vary from this estimate because of special local pricing, availability or pricing adjustments not reflected in the dealer's computer system. See salesperson for the most current information.



Selected Equipment & Specs (cont'd)

Speed sensitive volume	Yes	Steering wheel controls	Yes
Voice activation	Yes	Streaming audio	Bluetooth yes
Audio Antenna			
Type	Fixed		
LCD Monitors			
1st row	2	Primary monitor size (inches)	4.2
Cruise Control			
Cruise control	With steering wheel controls		
Convenience Features			
Retained accessory power	Yes	12V DC power outlet	2
Emergency SOS	911 Assist	Wireless phone connectivity	Bluetooth
Smart device integration	App link	Upfitter switches	Yes
Door Lock Activation			
Type	Power with 2 stage unlock	Remote	Keyfob (all doors)
Integrated key/remote	Yes		
Instrumentation Type			
Display	Analog		
Instrumentation Gauges			
Tachometer	Yes	Oil pressure	Yes
Engine temperature	Yes	Transmission fluid temp.	Yes
Engine hour meter	Yes		
Instrumentation Warnings			
Oil pressure	Yes	Engine temperature	Yes
Battery	Yes	Lights on	Yes
Key	Yes	Low fuel	Yes
Door ajar	Yes	Service interval	Yes
Brake fluid	Yes	Low tire pressure	Yes
Instrumentation Displays			
Clock	In-radio display	Compass	Yes
Exterior temp	Yes	Systems monitor	Yes
Camera(s) - rear	Yes		
Instrumentation Feature			
Trip computer	Yes	Trip odometer	Yes
Steering Wheel Type			
Material	Urethane	Tilting	Manual
Telescoping	Manual		
Front Side Windows			
Window 1st row activation	Power		
Window Features			
1-touch down	Driver and passenger	1-touch up	Driver and passenger
Tinted	Light		
Front Windshield			
Wiper	Variable intermittent		

Prices and content availability as shown are subject to change and should be treated as estimates only. Actual base vehicle, package and option pricing may vary from this estimate because of special local pricing, availability or pricing adjustments not reflected in the dealer's computer system. See salesperson for the most current information.



Selected Equipment & Specs (cont'd)

Rear Windshield

Window Fixed

Interior

Passenger Visor

Mirror Yes

Rear View Mirror

Day-night Yes Auto-dimming Yes

Headliner

Coverage Full Material Cloth

Floor Trim

Coverage Full Covering Vinyl/rubber

Trim Feature

Gear shift knob Urethane Interior accents Chrome

Lighting

Dome light type Fade Front reading Yes

Illuminated entry Yes Variable IP lighting Yes

Storage

Driver door bin Yes Front Beverage holder(s) Yes

Glove box Locking Passenger door bin Yes

Illuminated Yes Instrument panel Bin

Dashboard Covered

Legroom

Front 43.9"

Headroom

Front 40.8"

Hip Room

Front 62.5"

Shoulder Room

Front 66.7"

Interior Volume

Passenger volume 64.6 cu.ft.

Prices and content availability as shown are subject to change and should be treated as estimates only. Actual base vehicle, package and option pricing may vary from this estimate because of special local pricing, availability or pricing adjustments not reflected in the dealer's computer system. See salesperson for the most current information.



Grande Truck Center
4562 IH 10 East, San Antonio, Texas, 782194205
Office: 210-661-4121
Fax: 210-666-7211

2019 F-350 Chassis, SD Regular Cab
4x2 SD Regular Cab 169" WB DRW XL(F3G)
Price Level: 930

Warranty - Standard Equipment & Specs

Warranty

Basic

Distance	36000 miles	Months	36 months
----------	-------------	--------	-----------

Powertrain

Distance	60000 miles	Months	60 months
----------	-------------	--------	-----------

Corrosion Perforation

Distance	Unlimited miles	Months	60 months
----------	-----------------	--------	-----------

Roadside Assistance

Distance	60000 miles	Months	60 months
----------	-------------	--------	-----------

Prices and content availability as shown are subject to change and should be treated as estimates only. Actual base vehicle, package and option pricing may vary from this estimate because of special local pricing, availability or pricing adjustments not reflected in the dealer's computer system. See salesperson for the most current information.